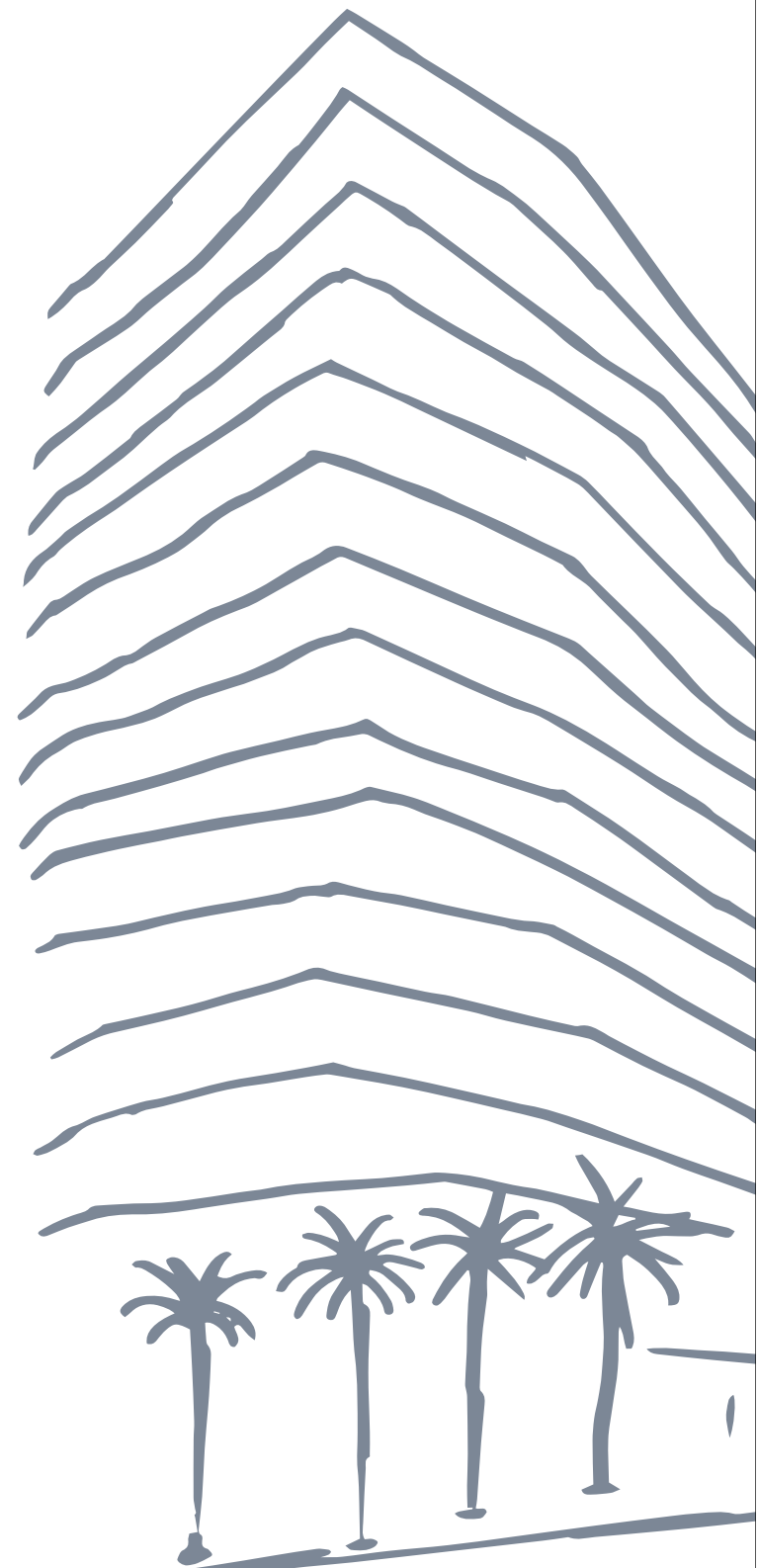


*"The things that make me different are the
things that make me."*

- A.A. Milne



A wide-angle photograph of a tropical beach. The foreground shows a sandy beach with a few palm trees on the left. The middle ground is dominated by the turquoise ocean, which transitions to a deeper blue as it meets the horizon. The sky is a clear, light blue with a few wispy clouds. The overall scene is bright and serene.

A LIMITED COLLECTION OF
UNLIMITED POSSIBILITIES

A STANDARD SET IN 1926

The Historic Bath Club

In an age when Collins Avenue was dotted with winter mansions, The Bath Club was a favored hideaway for distinguished members, celebrities and world leaders.

The Residences at The Bath Club

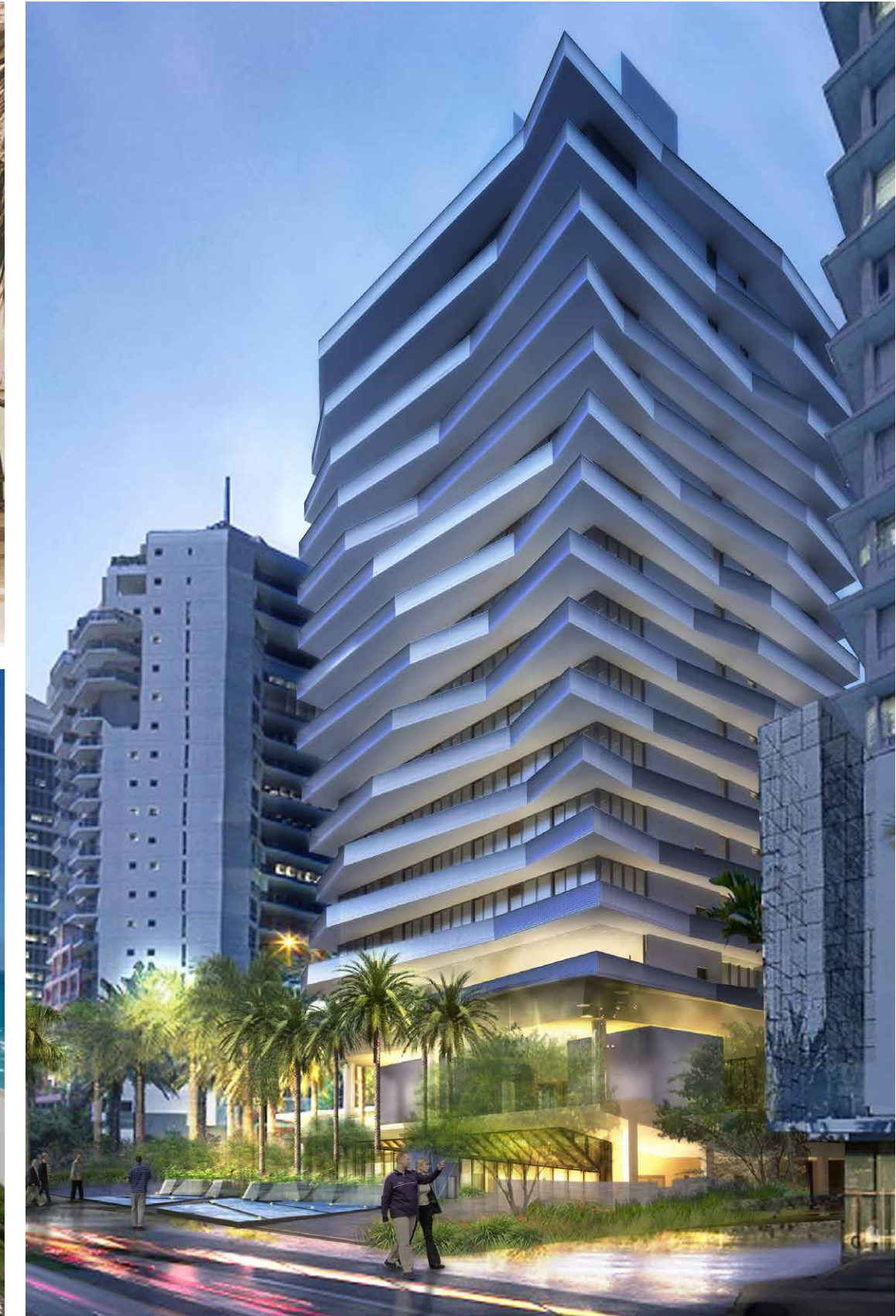
In 2005, a gleaming oceanfront tower arose next to the club that shares its name. The project was a runaway success, attracting buyers from around the world.

The Bath Club Estates

Marking a return to an era of gilded elegance, The Bath Club Estates will come to life in 2016, perfecting a nearly century-old vision of stylish, sophisticated living.

"At The Bath Club Estates, we are building on the success of The Residences at The Bath Club to capture the essence of the legendary location, lifestyle, and brand to deliver a new custom collection of thirteen luxury homes on the edge of the ocean."

- R. Donahue Peebles



13

WORKS OF WONDER
STARTING AT \$10 MILLION



1

PENTHOUSE LIFESTYLE
ON AN ENTIRELY NEW LEVEL





2

EXPANSIVE BEACH VILLAS
ON THE EDGE OF THE OCEAN



Artist conceptual rendering of the private villa



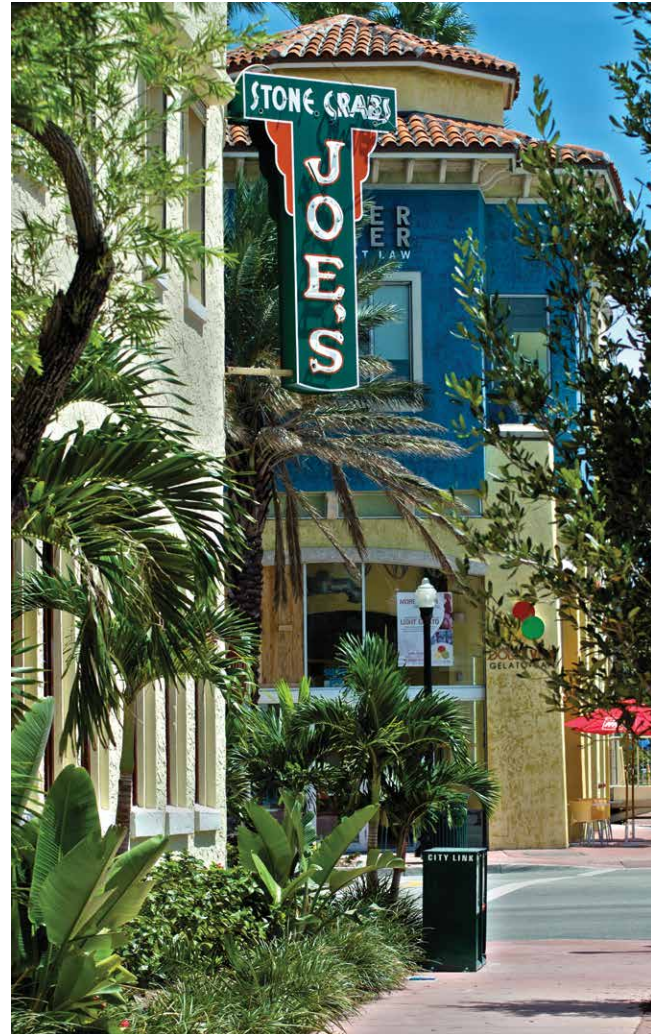
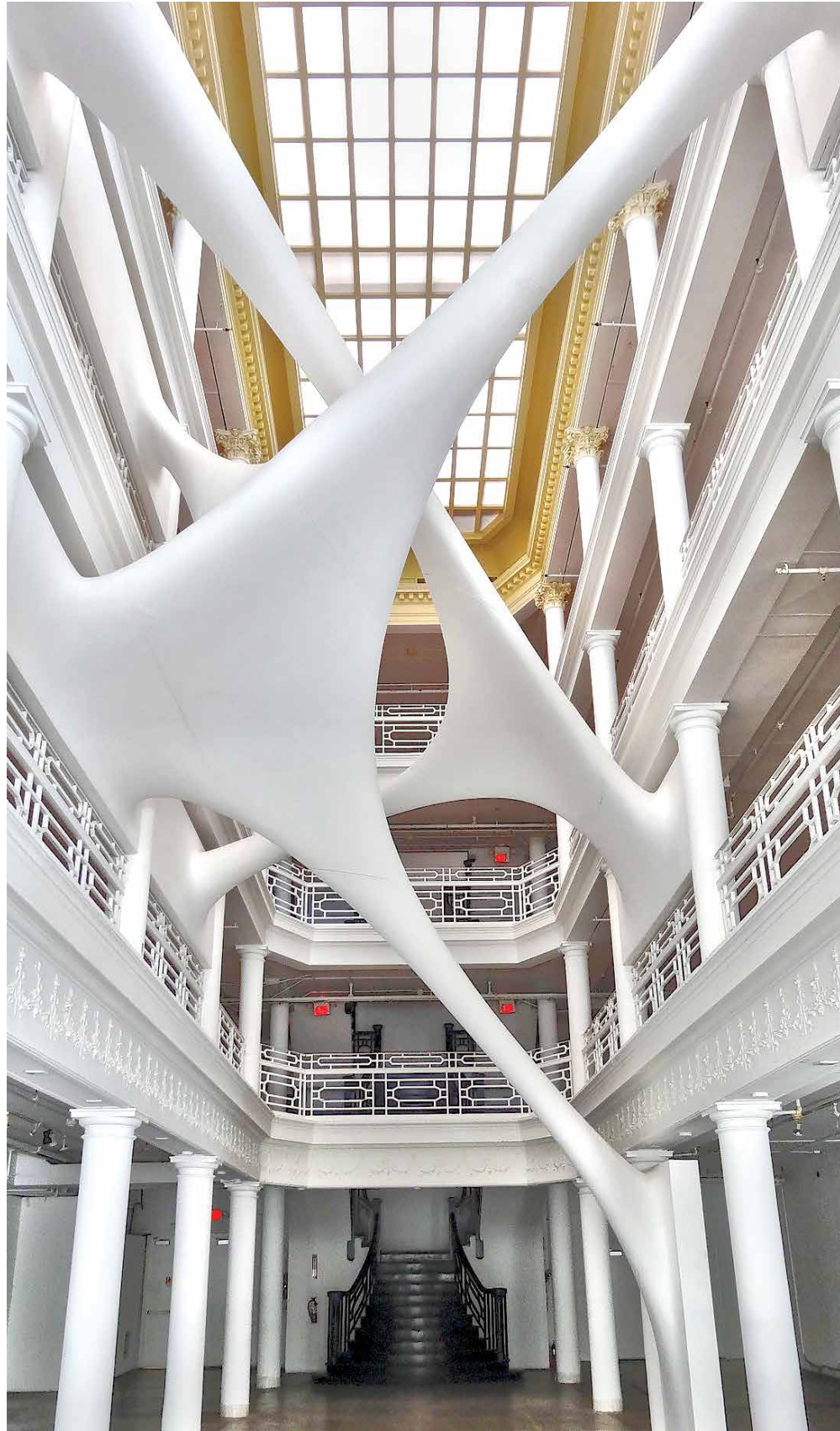
THE MANY PRIVILEGES
OF A PRIVILEGED FEW

**Artist conceptual rendering of the private villa pool deck.*

EFFORTLESS PERFECTION
ACROSS EVERY SPACE



ABOVE IT ALL,
STEPS FROM EVERYTHING



UNIQUELY YOURS

The ultimate artistic expression, bring your unique vision to life in collaboration with one of four world-class designers.

Alexandra Champalimaud // CHAMPALIMAUD

João Armentano //

João Armentano

Jennifer Post //

JENNIFERPOST
DESIGN INC.

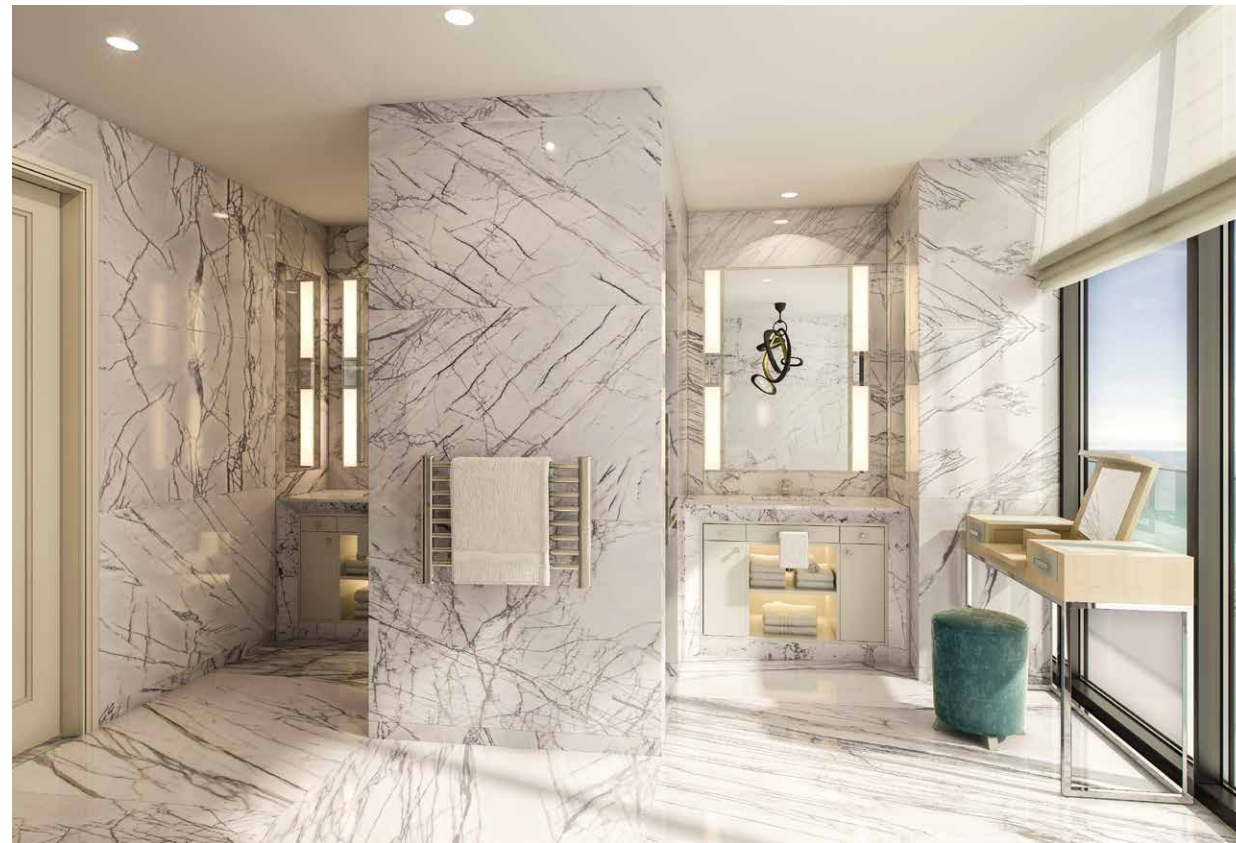
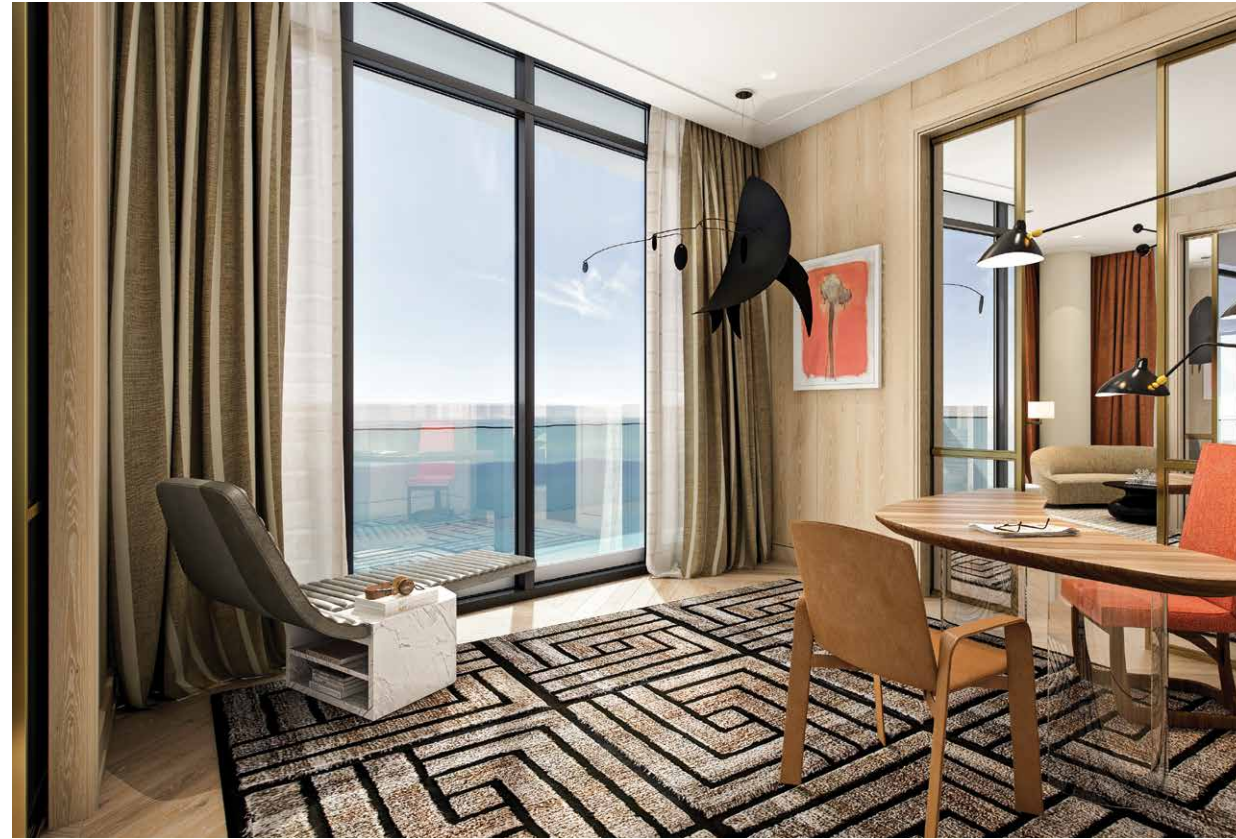
Alison Spear //

ARQUITECTONICAINTERIORS



ALEXANDRA CHAMPALIMAUD

Alexandra is known for her globally inspired design sense, her unique mastery of color, pattern and texture, and her seasoned understanding of the foundations and principles of classic design.



JOÃO ARMENTANO

A native Brazilian known for his daring, unconventional approach, João's signature "JA style" is characterized by rich, earthy tones and playful classic-meets-modern forms.



JENNIFER POST

Jennifer creates modern, balanced interiors with sophisticated flair and an unmatched richness, and is known for her thoughtful use of natural light, white space and sublime touches of color.

Jennifer Post.



ALISON SPEAR

As a celebrated architect, Alison has turned her wealth of design experience into stunning interiors that marry classic grace with stunning modern flair.

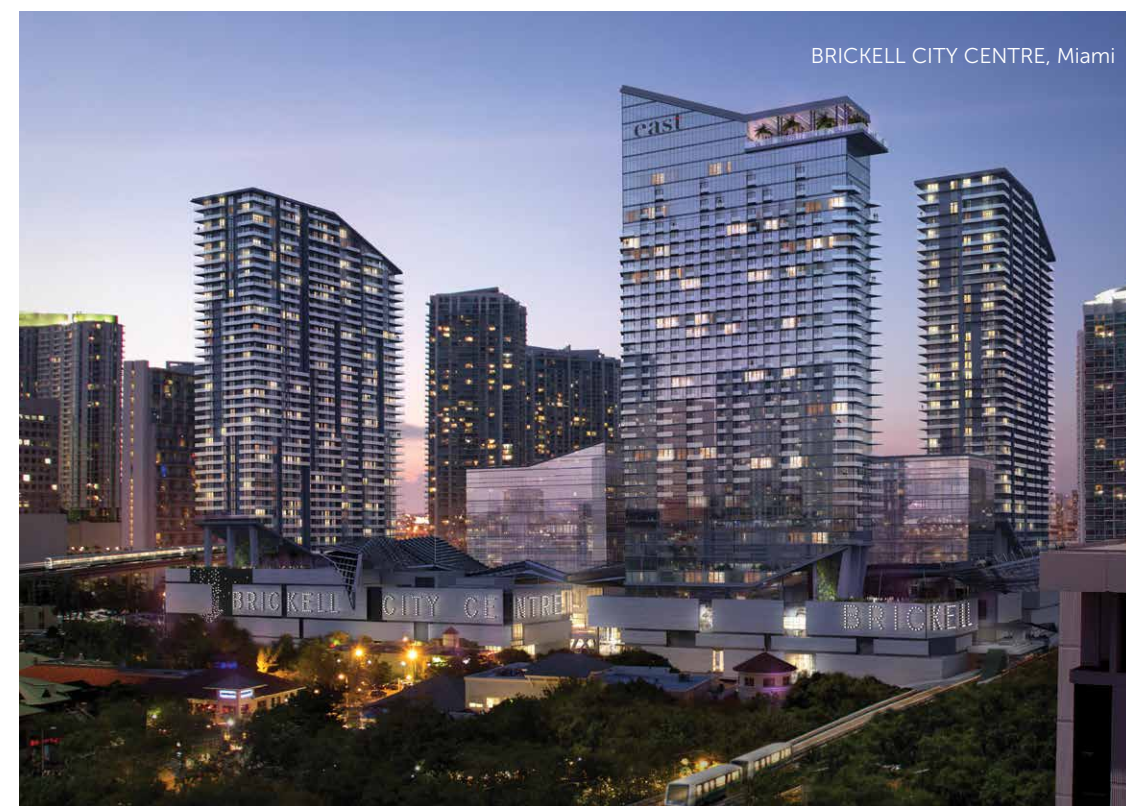
Alison Spear



BERNARDO FORT-BRESCIA

FOUNDING PRINCIPAL // ARQUITECTONICA

Bernardo Fort-Brescia is a founding principal of the Miami-based firm of Arquitectonica. Fort-Brescia has been the recipient of numerous design awards, and his work has been featured in publications, museums and institutions around the world. Founded in Miami in 1977, Arquitectonica now services developers worldwide from its 10 global offices.





R. DONAHUE PEEBLES

CHAIRMAN & CEO // THE PEEBLES CORPORATION

R. Donahue Peebles is Founder, Chairman and CEO of The Peebles Corporation. Over the past 30 years, the company has built an industry-leading portfolio of residential and commercial developments totaling six million square feet and more than \$5 billion in major American gateway cities including New York, Washington, D.C., Philadelphia, San Francisco, Las Vegas, Miami and Miami Beach.

A handwritten signature in blue ink that reads "R. Donahue Peebles".



THE BATH CLUB ESTATES

Welcome to the highest expression of tailored luxury living. The Bath Club Estates is an unparalleled residential experience curated by visionary developer R. Donahue Peebles and brought to life by a coterie of the world's most accomplished architectural and design professionals. Set on one of the last stretches of undeveloped oceanfront property in Miami Beach, this limited collection of 13 sweeping estates presents a unique opportunity to make your ultimate dream home a reality.

DEVELOPMENT

R. Donahue Peebles // The Peebles Corporation

ARCHITECTURE

Bernardo Fort-Brescia // Founding Principal, Arquitectonica

CUSTOM ESTATE DESIGNERS

Alexandra Champalimaud // President & Principal Designer, CHAMPALIMAUD

João Armentano // Principal, João Armentano Arquitetura

Jennifer Post // Principal, Jennifer Post Design

Alison Spear // Director, Arquitectonica Interiors

THE ESTATES

Tower Estates are 5,000 interior square feet with oversized wraparound terraces

Each Villa averages 9,000 interior square feet with a beachfront terrace and private pool

The tri-level Penthouse is 9,000 interior square feet with a 4,000-square-foot rooftop lounge and private pool

RESIDENCES & AMENITIES

- > Oversized wraparound terraces with summer kitchens
- > Private en-suite elevator access
- > Two enclosed garage bays
- > Pool and beach service
- > Private poolside cabana for each residence
- > Ocean view fitness center with state-of-the-art equipment
- > Hammam-inspired spa environment
- > Fully equipped HD video conferencing center
- > Around-the-clock security, valet and concierge services
- > LEED® Certified by the U.S. Green Building Council

LOCATION

Set in the heart of the historic

Collins Waterfront Architectural District

6747 Collins Avenue, Miami Beach, FL 33141

COMPLETION

Spring 2016



For additional information please call our office at (305) 336-0457