



THE ESTATES AT ACQUALINA
The World's Finest Residences

ACQUALINA IS A SINGULARLY EXQUISITE DESTINATION WE HAVE CREATED THROUGH THOUGHTFUL ATTENTION TO THE COUNTLESS DETAILS OF ARCHITECTURE, DESIGN, FIVE STAR SERVICE, AND AMENITIES THAT TOGETHER DEFINE A TRULY LUXURIOUS LIFESTYLE.

WITH THE TWO RESIDENTIAL TOWERS, AMENITIES VILLA, EXPANSIVE BEACH SETTING ON 5.6 ACRES AND GARDENS THAT MAKEUP THE ESTATES AT ACQUALINA, WE ARE BUILDING UPON OUR LEGACY OF OFFERING GRACIOUS, VIBRANT OCEANFRONT LIVING UNLIKE ANY OTHER IN MIAMI.

Heritage Begins Here

Reservations: (305) 336-0457



Site Plan Key

- 1 Estate at Acqualina Feature Signage
- 2 Cascading Fountain | Public Art Fronting Collins Avenue
- 3 Arrival Sequence through Seagrape Allee
- 4 Guard House/ Entry Gates
- 5 Villa Water Feature and Arrival
- 6 Arrival Water Features
- 7 North Tower Motor Court (Elevation +20)
- 8 South Tower Motor Court (Elevation +20)
- 9 Vehicular Parking | Vine Covered Trellis
- 10 Pedestrian Bridge Connection to Acqualina Resort and Spa
- 11 Property Line
- 12 Public Beach Walk
- 13 Parking Garage Entrance
- 14 Collins Avenue
- 15 Fire Lane | Sculpture Pocket Park | Dog Area
- 16 Restaurant Terrace
- 17 Villa Pool
- 18 Upper Amenity deck (Elevation +20)
- 19 Lawn Terrace
- 20 Temporary Villa Cabanas, 4 total
- 21 Tree Lined Pedestrian Promenade
- 22 Cascading Water Falls, Typical
- 23 Grand Stair to Ocean and Beach Level
- 24 Beach Bar Access | Lower Amenity Deck
- 25 Elevator between Lower Amenity, Beach Bar & Lobby Levels
- 26 Entry 10 Towers
- 27 Formal Lawn | axial view to the ocean
- 28 Bocca Ball Opportunity
- 29 Large sculpture opportunity
- 30 Sunken Water Fill Garden Room | Event Space
- 31 Overlook Lawn Terrace
- 32 Large Interactive Sculpture | Kids play area
- 33 Sculpture Axis and Art Walk
- 34 Leisure Sporting Lawn, Bocca Ball | Croquet | Soccer
- 35 Landscape Folly | Sculpture and Water Feature Opportunity
- 36 Trellis Covered Pool Table
- 37 Trellis with swings
- 38 Stair connection to Basketball Court
- 39 Basketball Court
- 40 Lower Active Pool Zone with 6 Cabanas
- 41 Family Restroom Entrance
- 42 Flow Rider Surf Pool
- 43 Surf Lookout Terrace
- 44 Garden Structure | Slide Connection
- 45 Recreational Pool & Water Slide
- 46 Multifunction Lawn | Game/ Putting Green Opportunity
- 47 Beach Entry Pool
- 48 Kids Lawn & Play Space
- 49 Temporary Cabanas | Gathering Area
- 50 Lower Adult Pool Zone with 6 Cabanas
- 51 Lap Pool
- 52 Spa (ESPA) Zone with 2 Massage Rooms | Hydrotherapy Pools
- 53 Multifunction Lawn | Dune-side message opportunity
- 54 Fire Place Gathering Area | Bar Extension
- 55 Intricate Garden Seating, Typical
- 56 Central Water Feature/ Seating Area
- 57 Trellis connection to Fire pit visits
- 58 Sunrise Yoga and Overlook Lawn
- 59 Lobby Extension
- 60 Axial Water Feature with Sculpture
- 61 Sunken Seating areas
- 62 Intricate Seating Areas with bubbling Water Features
- 63 Trellis Covered Gathering area with Large Fire Place
- 64 Private Amenity Deck
- 65 Native Lawn Area with Seating
- 66 Dune Planting
- 67 Beach Showers
- 68 Beach Access



THE ESTATES AT ACQUALINA

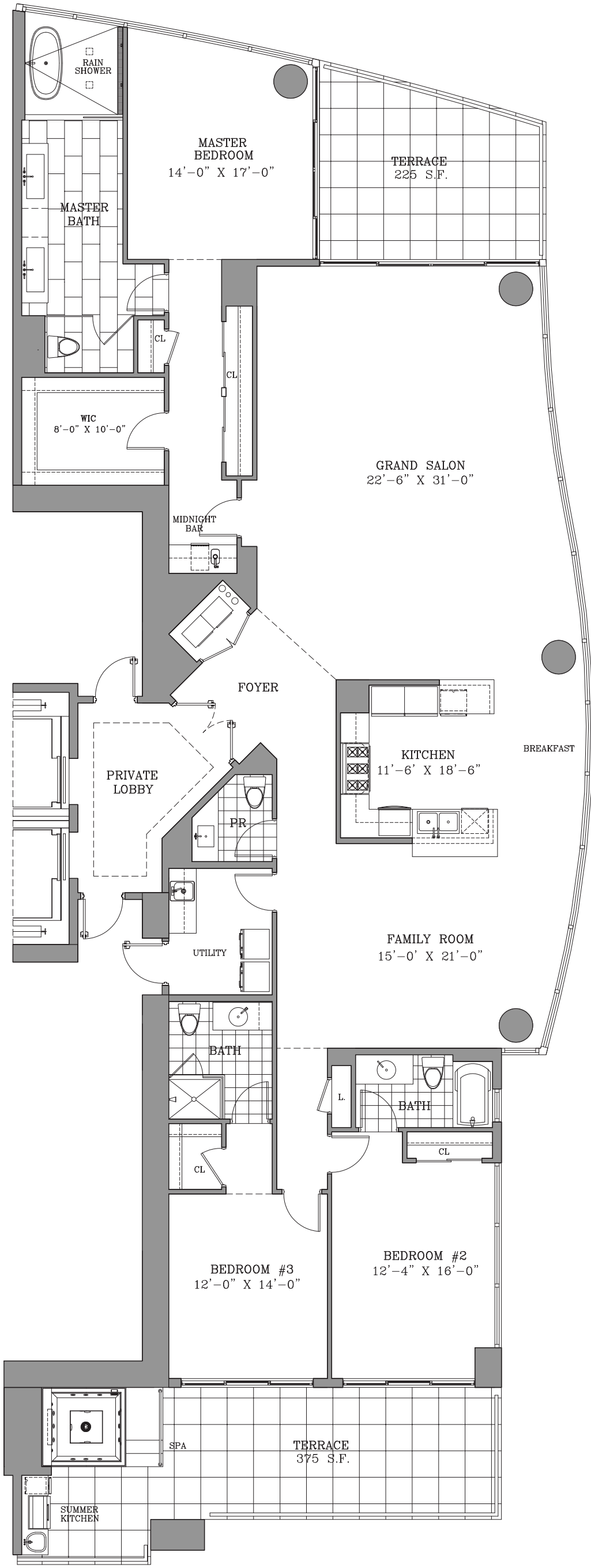


SCALE: 1"=20'-
 0 5' 10' 20' 40' 80'



OTHER NATURAL MATERIALS ARE UNLIKELY, BECAUSE OF THE CHARACTERISTICS OF THE PRODUCTS, TO BE DUPLICATED AS SHOWN IN ANY MODEL RESIDENCE. PURCHASER SHOULD EXPECT SIZE, COLOR, GRAIN AND QUALITY VARIATIONS, INCLUDING, WITHOUT LIMITATION, CHANGES AND VARIANCES IN THE SIZE OF SLABS, TILE AND/ OR OTHER MATERIALS UTILIZED IN THE RESIDENCE. MAKE THE RESIDENTS. THIS IS NOT AN OFFER TO SELL OR SOLICITATION OR OFFERS TO BUY THE CONDOMINIUM UNITS IN STATES WHERE SUCH OFFERS OR SOLICITATION CANNOT BE MADE. PRICES, LANDS AND PROJECTS ARE SUBJECT TO CHANGE WITHOUT NOTICE. THE SALES PRICE DESCRIBED HEREIN ARE APPROXIMATE AND ARE NOT STRAIGHT AND ARE NOT STRAIGHT. CERTAIN ITEMS, IF INCLUDED WITH THE RESIDENCE, SUCH AS MARBLE, STONE, GRANITE, TILE, WOOD AND

ALL REPRESENTATIONS CANNOT BE RELIED UPON AS CORRECT STATEMENTS OF THE DEVELOPER. FOR CORRECT REPRESENTATIONS, REFERENCE SHOULD BE MADE TO THE DOCUMENTS REQUIRED BY SECTION 178.22, A FORMER STATUTE, TO BE FURNISHED BY A DEVELOPER TO A BUYER OR LESSEE. THIS OFFERING IS MADE ONLY BY THE PROSPECTUS FOR THE CONDOMINIUM AND NO STATEMENT SHOULD BE RELIED UPON IF NOT MADE IN THE PROSPECTUS. THIS IS NOT AN OFFER TO SELL OR SOLICITATION OF OFFERS TO BUY. THE CONDOMINIUM UNIT IS SITES WHERE SUCH OFFER IS MADE. THE DEVELOPER'S OFFICE IS AT 10000 W. BROADWAY, SUITE 1000, DENVER, CO 80231. ALL MEASUREMENTS AND DIMENSIONS SHOWN IN THIS OFFERING ARE APPROXIMATE AND NOT TO BE CONSIDERED AS A GUARANTEE OF ACCURACY. THE DEVELOPER'S OFFICE IS AT 10000 W. BROADWAY, SUITE 1000, DENVER, CO 80231. ALL MEASUREMENTS AND DIMENSIONS SHOWN IN THIS OFFERING ARE APPROXIMATE AND NOT TO BE CONSIDERED AS A GUARANTEE OF ACCURACY. THE DEVELOPER'S OFFICE IS AT 10000 W. BROADWAY, SUITE 1000, DENVER, CO 80231. ALL MEASUREMENTS AND DIMENSIONS SHOWN IN THIS OFFERING ARE APPROXIMATE AND NOT TO BE CONSIDERED AS A GUARANTEE OF ACCURACY.



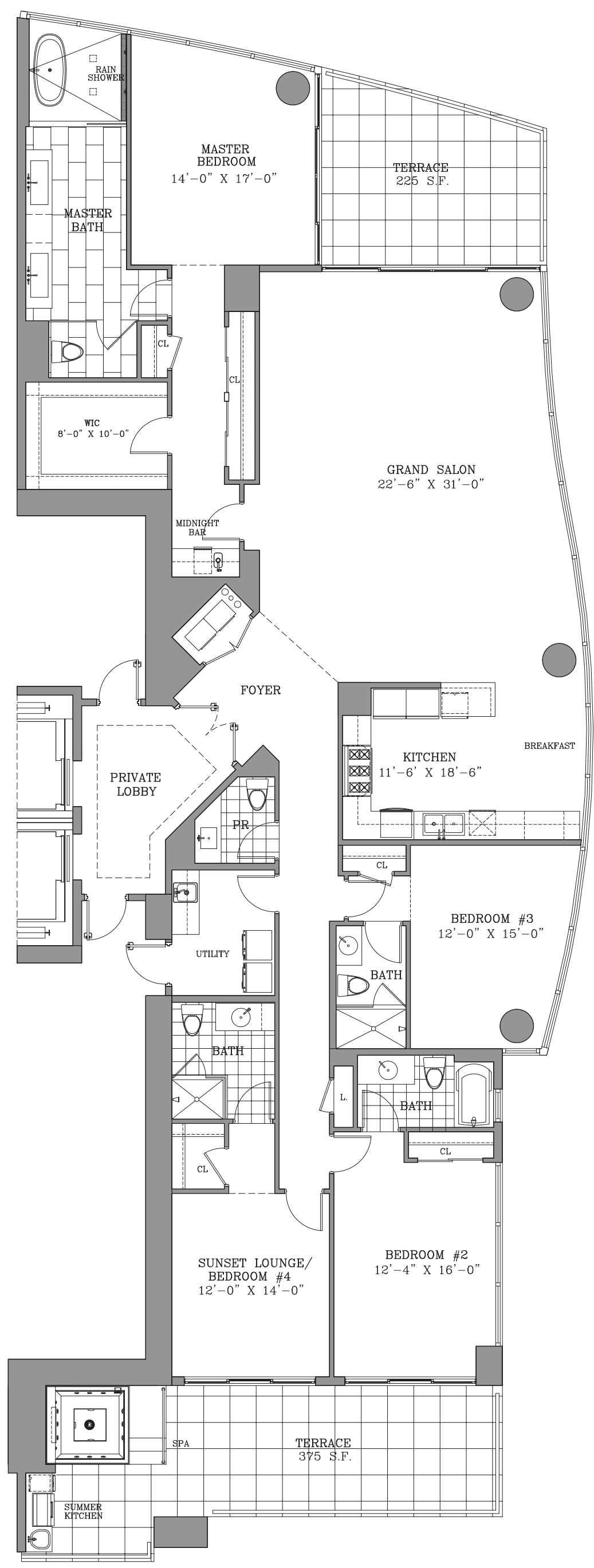
UFFIZI

3 BEDROOMS/3.5 BATHS
 GRAND SALON/FAMILY ROOM
 SPA/SUMMER KITCHEN

ENCLOSED AREA:	3,250 SF/	301.93 SM
TERRACE AREA:	600 SF/	55.74 SM
TOTAL AREA:	3,850 SF/	357.68 SM



ALL REPRESENTATIONS CANNOT BE RELIED UPON AS CORRECT STATEMENTS OF THE DEVELOPER. FOR CORRECT REPRESENTATIONS, REFERENCE SHOULD BE MADE TO THE DOCUMENTS REQUIRED BY SECTION 17.02. A FORMER OWNER OR LESSEE. THIS OFFERING IS MADE ONLY BY THE PROSPECTUS FOR THE COMMUNITY AND NO STATEMENT SHOULD BE RELIED UPON IF NOT MADE IN THE PROSPECTUS. THIS IS NOT AN OFFER TO SELL OR SOLICITATION OF OFFERS TO BUY. THE COMMUNITY UNITS IN STATES WHERE SUCH OFFERS ARE PROHIBITED BY LAW, SUCH AS CALIFORNIA, ILLINOIS, IOWA, KANSAS, MISSOURI, NEBRASKA, NEVADA, NEW YORK, NORTH CAROLINA, NORTH DAKOTA, SOUTH CAROLINA, TEXAS, VIRGINIA, WISCONSIN AND WYOMING, SHOULD BE PURCHASED THROUGH AN INVESTMENT BROKER OR REAL ESTATE BROKER. THE DEVELOPER MAKES NO WARRANTY, REPRESENTATION OR STATEMENT, EITHER EXPRESS OR IMPLIED, REGARDING THE ACCURACY, COMPLETENESS OR QUALITY OF ANY INFORMATION PROVIDED IN THIS OFFERING. THE DEVELOPER MAKES NO WARRANTY, REPRESENTATION OR STATEMENT, EITHER EXPRESS OR IMPLIED, REGARDING THE ACCURACY, COMPLETENESS OR QUALITY OF ANY INFORMATION PROVIDED IN THIS OFFERING. THE DEVELOPER MAKES NO WARRANTY, REPRESENTATION OR STATEMENT, EITHER EXPRESS OR IMPLIED, REGARDING THE ACCURACY, COMPLETENESS OR QUALITY OF ANY INFORMATION PROVIDED IN THIS OFFERING. THE DEVELOPER MAKES NO WARRANTY, REPRESENTATION OR STATEMENT, EITHER EXPRESS OR IMPLIED, REGARDING THE ACCURACY, COMPLETENESS OR QUALITY OF ANY INFORMATION PROVIDED IN THIS OFFERING.



UFFIZI ALT

3 BEDROOMS/4.5 BATHS
 GRAND SALON/SUNSET LOUNGE/BR.4
 SPA/SUMMER KITCHEN

ENCLOSED AREA:	3,250 SF/	301.93 SM
TERRACE AREA:	600 SF/	55.74 SM
TOTAL AREA:	3,850 SF/	357.68 SM



